

Power Amplifier

6-18GHz /50dB Gain/48 dBm Psat/**Power Adjustable**

TLPA6G18G-48-48-ATT

TURPA6G18G-4848ATT is a power amplifier with a typical power gain of 50 dB and a Psat of 48 dBm across the frequency range of 6 to 18 GHz. The DC power requirement for the amplifier is +28 VDC/800 W. The input port configuration offers coax adapter structure with SMA female and output port configuration offers coax adapter structure with N female.

Features:

- Ultra Wide Band: 6-18GHz
- Gain: 50dB Typ
- Output Power Psat: 48dBm Min
- Good Power and Gain Flatness
- 50 Ohm Matched Input / Output

Applications:

- Cellular
- PCN
- GSM
- ISM
- Lab Test

电气特性 Electrical Characteristics:

| 参数 Parameter | Min | Typ | Max | 单位 Units |
|------------------------------|-----|------|-----|----------|
| 频率范围 Frequency range | | 6-18 | | GHz |
| 功率增益 Power Gain | 48 | 50 | | dB |
| 增益平坦度 Gain Flatness | | ±4.5 | | dB |
| 线性输出功率 Output P1dB | | 45 | | dBm |
| 饱和输出功率 Output Psat | 48 | | | dBm |
| 杂散 Spurious@Pout=47dBm | | -60 | -50 | dBc |
| 二次谐波 2nd Harmonic@Pout=48dBm | | -20 | -12 | dBc |
| 输入驻波 Input VSWR | | | 2 | :1 |
| 直流电压 DC Voltage | | 28 | | V DC |
| 直流电流 DC Current | | 18 | | A |
| 功耗 Power Consumption | | 800 | | W |

控制接口 Control Connector(J30J-9ZKP):

| J30J-9ZKP | |
|-----------|--|
| 引脚 Pin | 功能 Function |
| 1 | TTL(High level conduction, low level cutoff) |
| 2 | 0.5dB attenuation |
| 3 | 1dB attenuation |
| 4 | 2dB attenuation |
| 5 | 4dB attenuation |
| 6 | 8dB attenuation |
| 7 | 16dB attenuation |
| 8~9 | GND |

温度环境 Environmental Conditions:

| 参数 Parameter | Min | Typ | Max | 单位 Units |
|------------------------------------|---|-----|-----|----------|
| 操作温度 Operating Temperature* | -20 | | +40 | °C |
| 存储温度 Non-operating Temperature* | -30 | | +50 | °C |
| 相对湿度 Relative humidity | | 95 | | % |
| 海拔 Altitude | 10,000 | | | feet |
| 震动 Shock / Vibration(MIL-STD-810F) | 25g rms (15 degree 2KHz) endurance, 1 hour per axis | | | |
| 冲击 Shock(non operating) | 20G for 11msc half sin wave,3 axis both directions | | | |

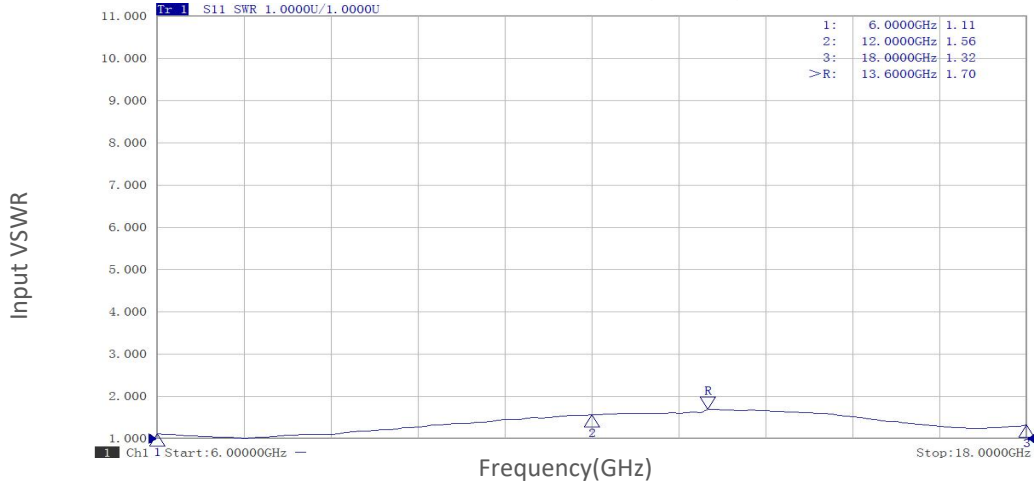
*Note: For a wider temperature range, please consult the manufacturer.

订货信息 Ordering Information:

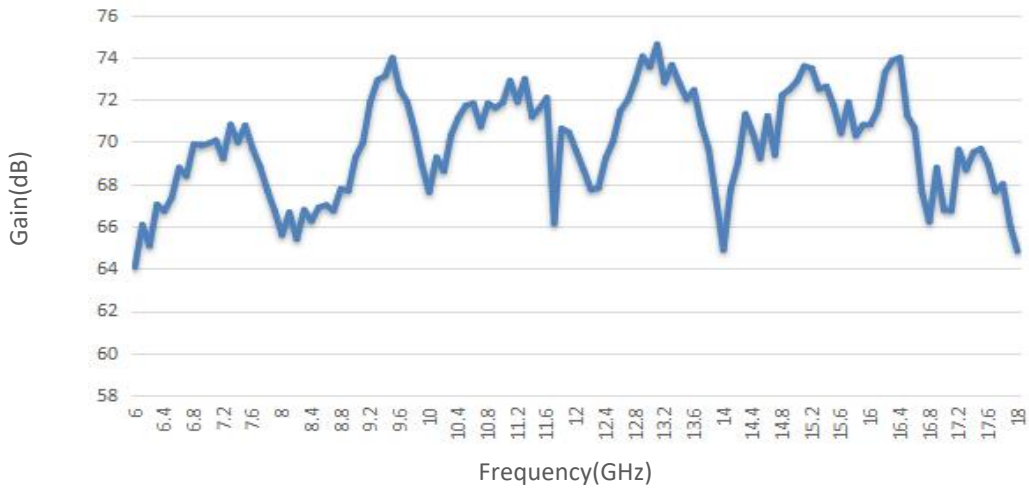
| 标准型号 Base Number | 描述 Description | 版本号 Revision |
|------------------|----------------|--------------|
|------------------|----------------|--------------|

典型曲线 Typical Performance Data:

Input VSWR vs Frequency



Small Signal Gain vs Frequency

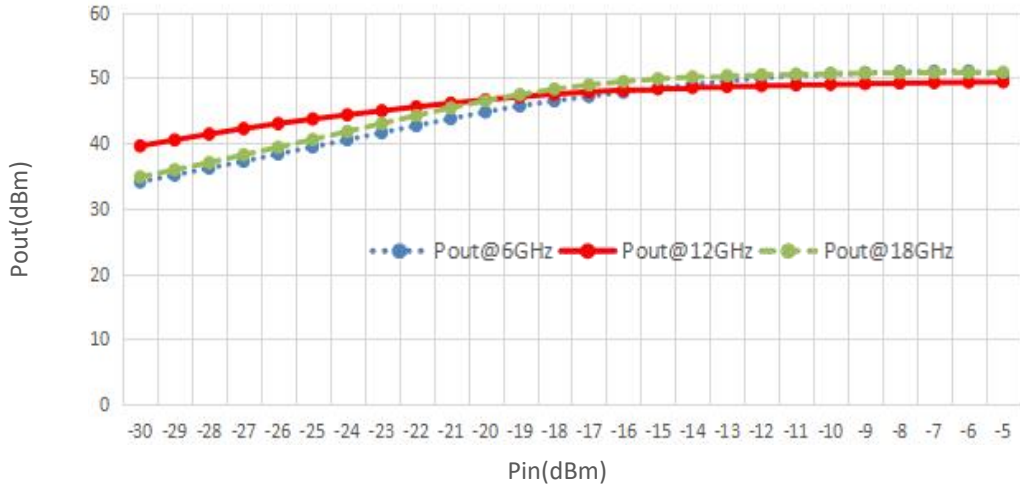


P1dB vs Frequency

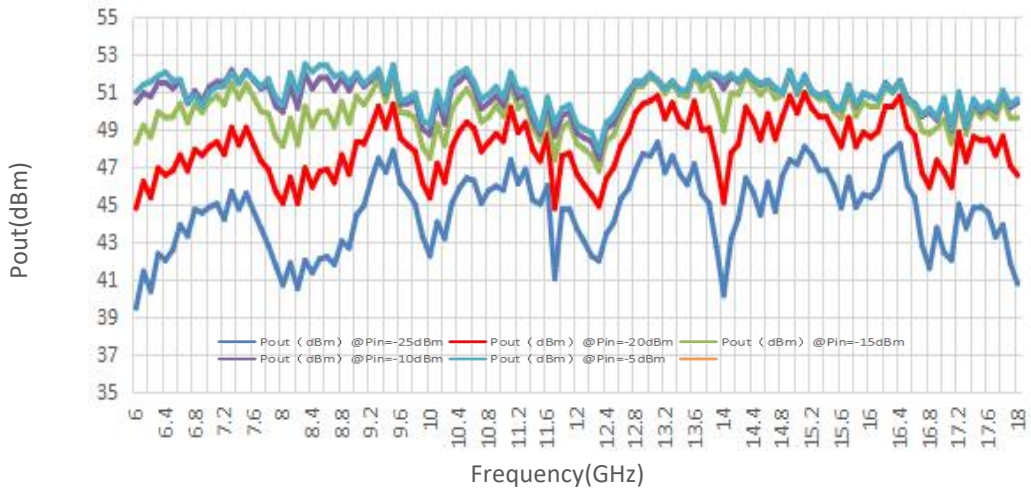
P1dB(dBm)

典型曲线 Typical Performance Data:

Pout@Pin



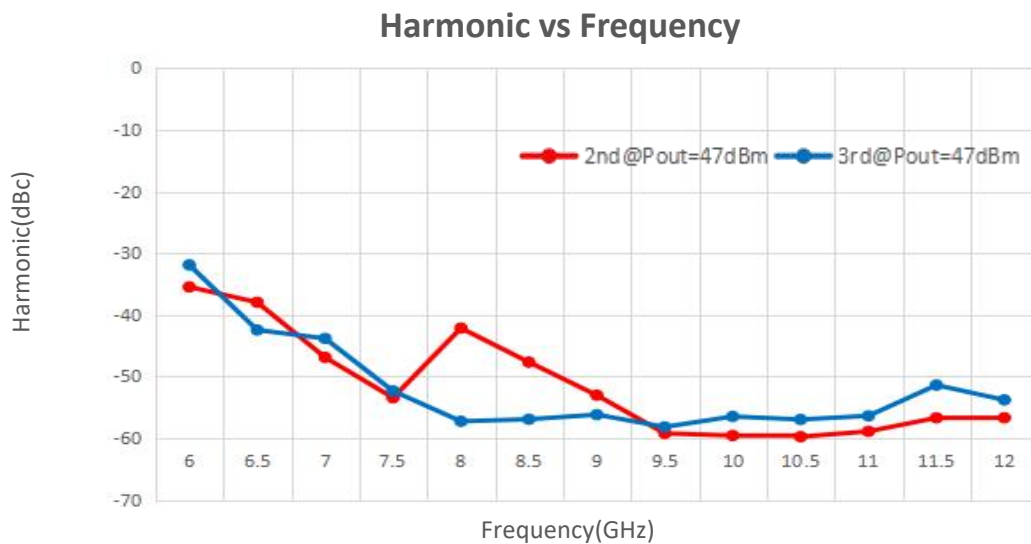
Pout@Equal_Pin



Spurious vs Frequency

Spurious(dBc)

典型曲线 Typical Performance Data:



Note: Above data is for ref only, actual data may vary from unit to unit depending on operating environment and other factors like material lots etc.